

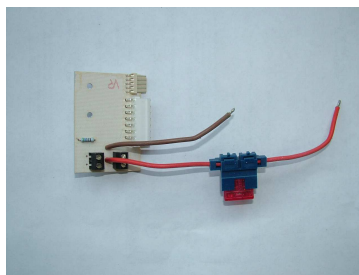
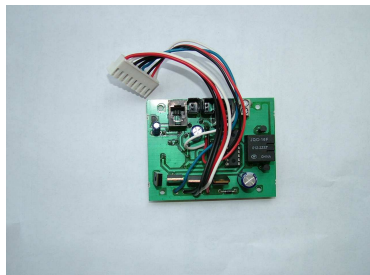
## Installation instruction for the replacement kit (BG1576) - HEKI 4

The following parts have to be exchanged:

Control system board

Distribution board with fuse

Remote control



### 1. Installation steps:

#### 1.1 Disassembly of the interior frame

#### 1.2 Exchange of the board

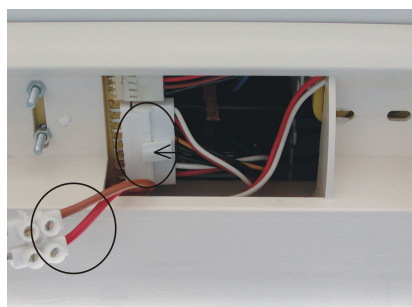
#### 1.3. Installation of the interior frame

#### 1.4 Coding of the remote control

#### 1.5 Operating



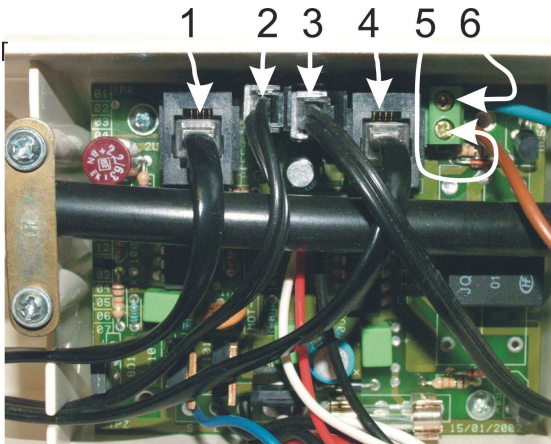
1.1.1 Remove all ventilation grids, covers for the lighting und fluorescent tubes.



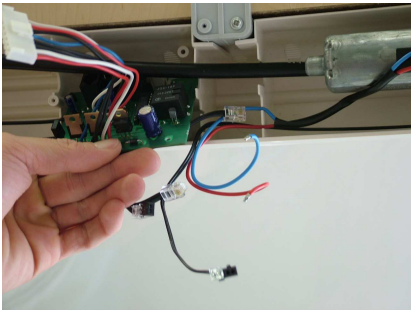
1.1.2 Switch off the power supply of the vehicle and disconnect the plug connection resp. the supply line.



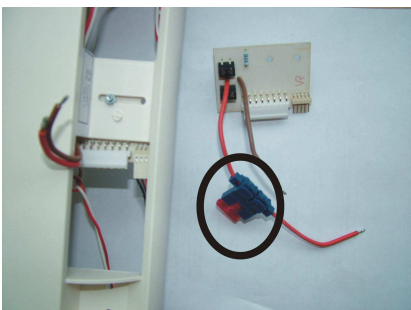
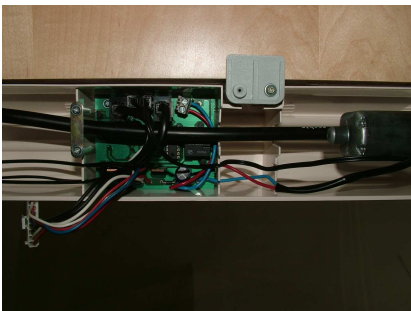
1.1.3 Screw off the interior frame.



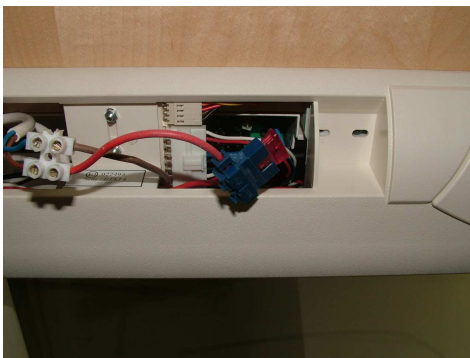
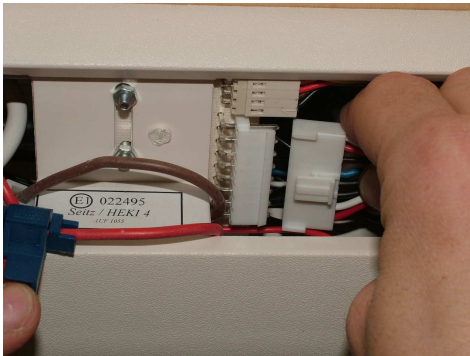
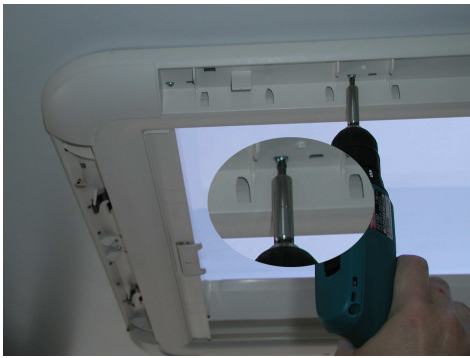
1.2.1 Mark the cables.



1.2.2 Disassemble the cables from the board, remove the old board, install the new board and connect the cables again.



1.2.3 Remove the existing distribution board (with/without fuse) inside the interior frame and install the new distribution board with fuse.



1.3.1 Install the HEKI 4 inner frame and connect the 12 Volt supply. Put the inner frame in place and fix with screws to the exterior frame using the smaller holes in the mounting block (screw 2,5x12)

*It is sufficient to tighten the screws gently!  
Check that the plug from the outer frame and the power supply from the vehicle are passed through the opening in the inner frame and are not jammed.*

Insert the plug from the outer frame into the socket in the interior frame.

Connect the 12 Volt supply + / - from the vehicle to the + / - supply of the HEKI 4 (Do not mix up the polarities, red = +).

*(Electrical connections are to be carried out only by experienced personnel.)*

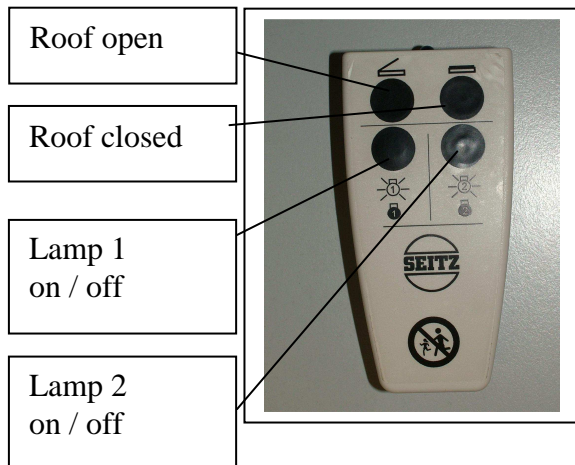
**Follow the safety instructions!**



1.3.2 Check whether the blinds function properly! If they do not slide properly, loosen slightly the screws of the inner frame.



1.3.3 Snap in position the ventilation grids and the covers for the lighting. (picture 9.7.2)  
*(a click should be audible)*


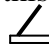


#### 1.4 Coding of the remote control:

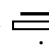
- interrupt the power supply (e.g. remove the fuse)
- switch on the power again – the red control lamp is blinking for 30 seconds
- during this time hold the remote control in the direction of the red lamp and press the buttons 1 and 2 simultaneously for approx. 5 seconds
- the red control lamp switches off after coding  
(If the remote control does not work after coding procedure restart coding as described before.)

#### 1.5 Operating instruction

##### 1.5.1 Open the roof

By pressing the button  the glass dome will be opened up to ca. 70°. Should an opening up to 70° not be required, this could be interrupted by pressing the button  once again.

##### 1.5.2 Close the roof

Press the button  permanently for closing the roof. (During opening of the roof the red control lamp is lit and switches off if the roof is completely closed and locked.)

##### 1.5.3 Lighting (optional):

Hold the remote control in the direction of the red control lamp and press once both buttons for the light. Now both lamps should be lit. By pressing once again the lamps will be switched off.